



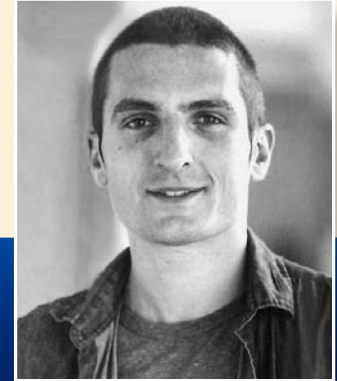
Experimental studies in wind-turbine aerodynamics

**Monday,
April 14, 2014,
3:30P.M.**

**Lower Level
Auditorium,
Geddes Hall**

Refreshments served
at 3:00 p.m. in the
Geddes Hall
Coffee House

Wind-energy constitutes a strong resource in the Netherlands, due to the particular characteristics of the territory. The TUDelft AWEP (Aerodynamics Wind-Energy Flight Performance and Propulsion) department aims at solving some of the main challenges in wind-turbine aerodynamics, including the optimization of the aerodynamic performance and the efficient dislocation of the units in modern wind-farms. In the present short talk Daniele Ragni, PostDoc at the TUDelft AWEP laboratories, shows his contribution in the experimental studies in rotor-aerodynamics, in view of his application to the open position at the University of Notre Dame.



Dr. Daniele Ragni
AWEP Department,
Faculty of Aerospace
Engineering
Technische Universiteit Delft

If you are interested in meeting individually with Dr. Ragni, please contact Linda at 631-5431.