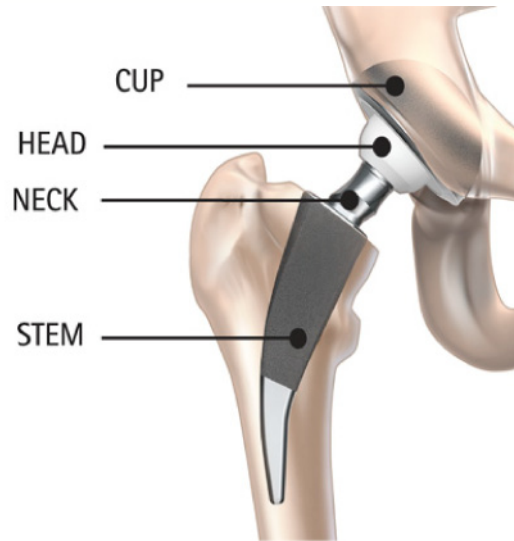
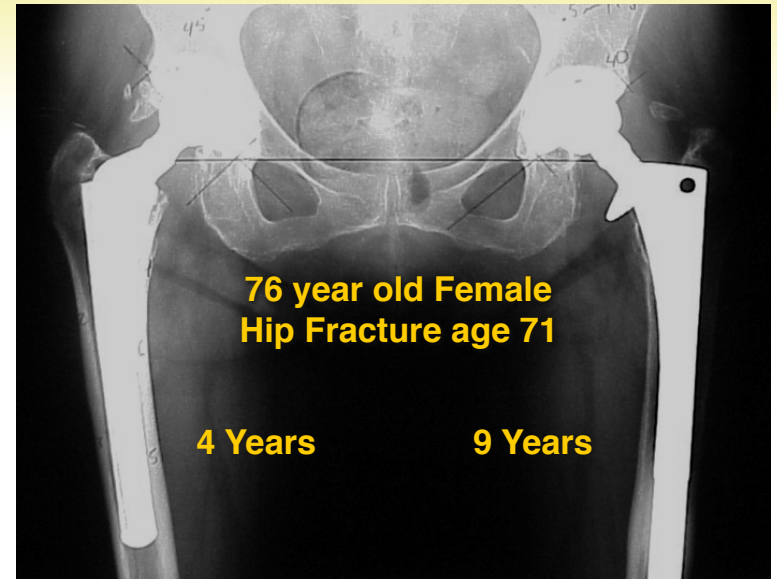


# Total Hip Arthroplasty

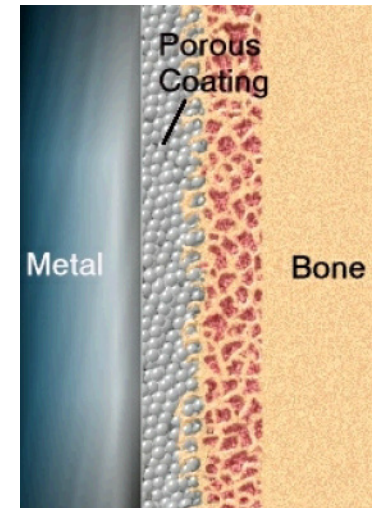
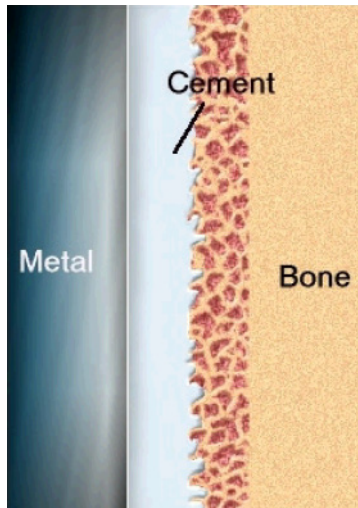


## Goals

- restore function for remainder of lifetime
- mechanical competence
- osteointegration



# Total Hip Arthroplasty



## cemented

- stainless steel or Co-Cr stem
- PMMA bone cement “glue”

## press fit

- Co-Cr, Ti
- roughened surfaces

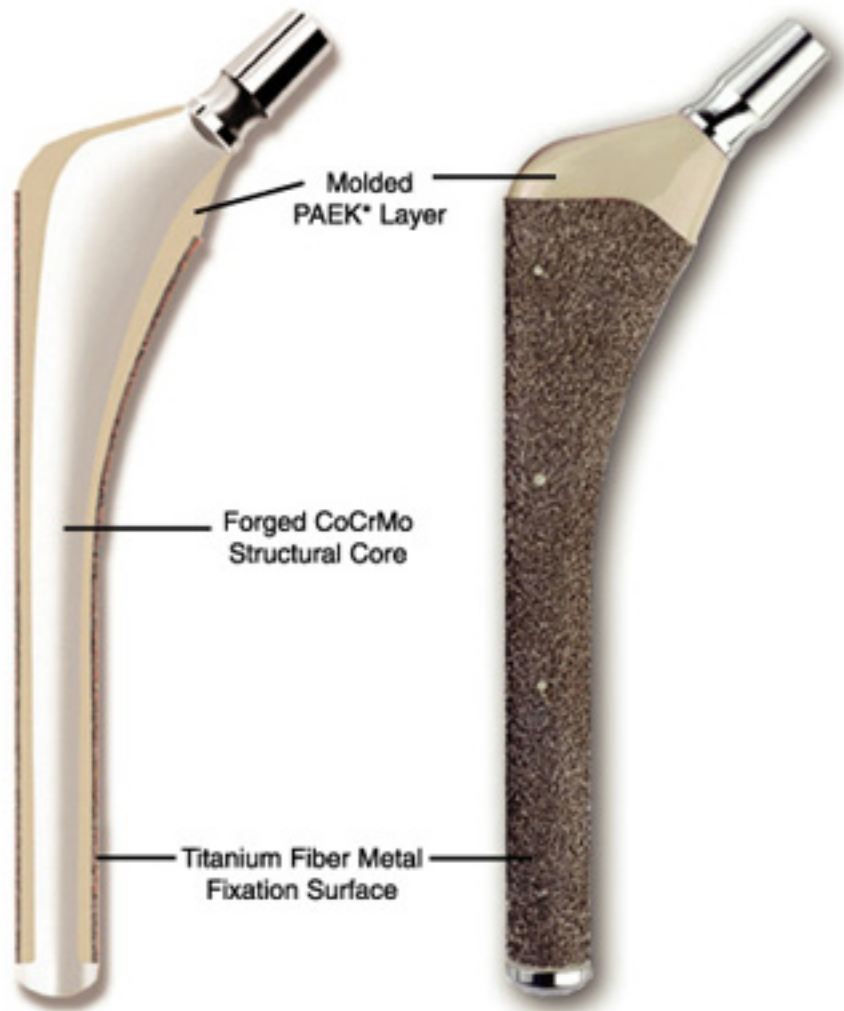
## bioactive

- Co-Cr, Ti
- hydroxyapatite coating

## bone ingrowth (porous)

- Co-Cr, Ti, Ta
- sintered beads and wires
- foams

# Total Hip Arthroplasty



isoelastic

- replace metal with plastic
- match anatomic stiffness
- prevent stress shielding