



US 20080206297A1

(19) **United States**

(12) **Patent Application Publication**

(10) **Pub. No.: US 2008/0206297 A1**

Roeder et al.

(43) **Pub. Date: Aug. 28, 2008**

(54) **POROUS COMPOSITE BIOMATERIALS AND RELATED METHODS**

Publication Classification

(76) Inventors: **Ryan K. Roeder**, Granger, IN (US); **Gabriel L. Converse**, Mishawaka, IN (US); **Stephen M. Smith**, South Bend, IN (US)

(51) **Int. Cl.**

A61F 2/28 (2006.01)

C08J 9/35 (2006.01)

A61K 38/18 (2006.01)

(52) **U.S. Cl. 424/422; 521/106; 514/12**

Correspondence Address:

HANLEY, FLIGHT & ZIMMERMAN, LLC
150 S. WACKER DRIVE, SUITE 2100
CHICAGO, IL 60606 (US)

(57)

ABSTRACT

Synthetic composite materials for use, for example, as orthopedic implants are described herein. In one example, a composite material for use as a scaffold includes a thermoplastic polymer forming a porous matrix that has continuous porosity and a plurality of pores. The porosity and the size of the pores are selectively formed during synthesis of the composite material. The example composite material also includes a plurality of anisometric calcium phosphate particles integrally formed, embedded in, or exposed on a surface of the porous matrix. The calcium phosphate particles provide one or more of reinforcement, bioactivity, or bioresorption.

(21) Appl. No.: **12/039,666**

(22) Filed: **Feb. 28, 2008**

Related U.S. Application Data

(60) Provisional application No. 60/904,098, filed on Feb. 28, 2007, provisional application No. 60/939,256, filed on May 21, 2007.

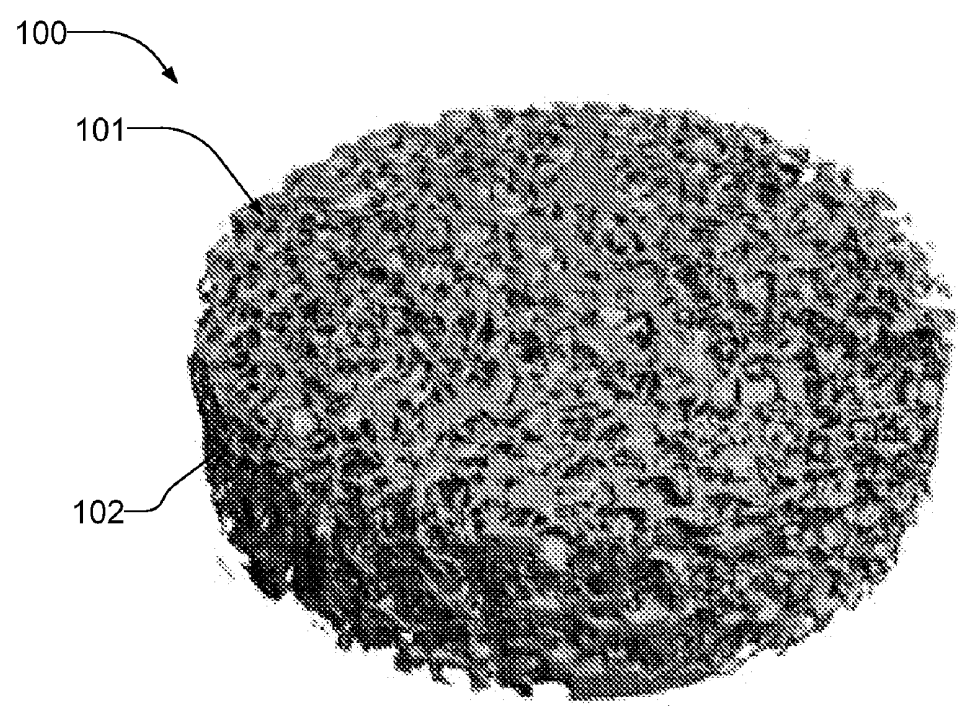


FIG. 1A

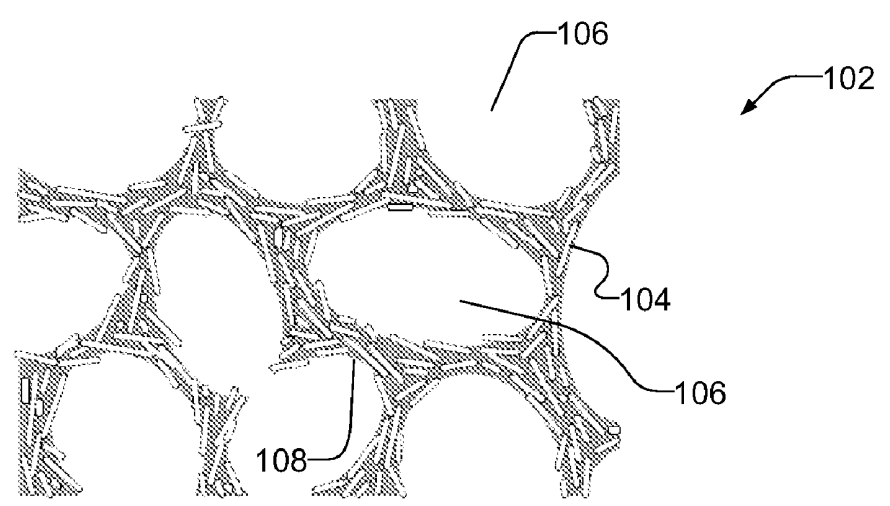


FIG. 1B

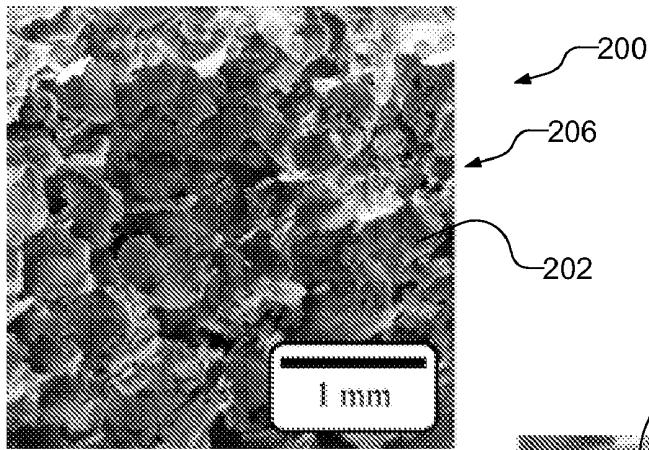


FIG. 2A

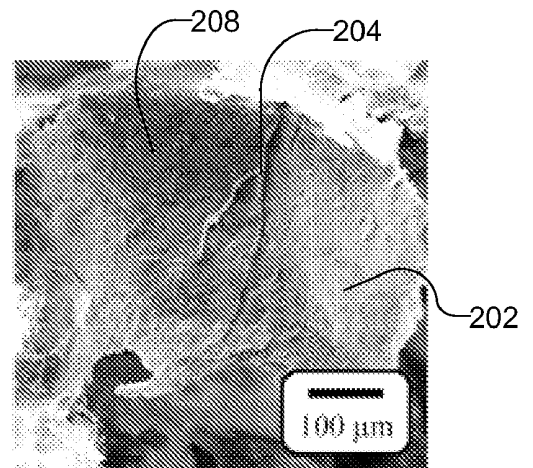


FIG. 2B

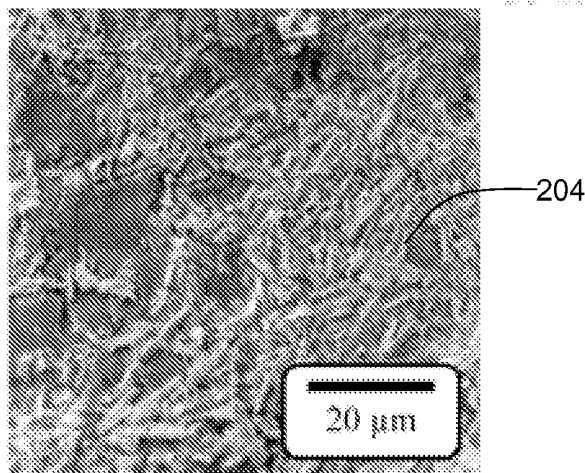


FIG. 2C

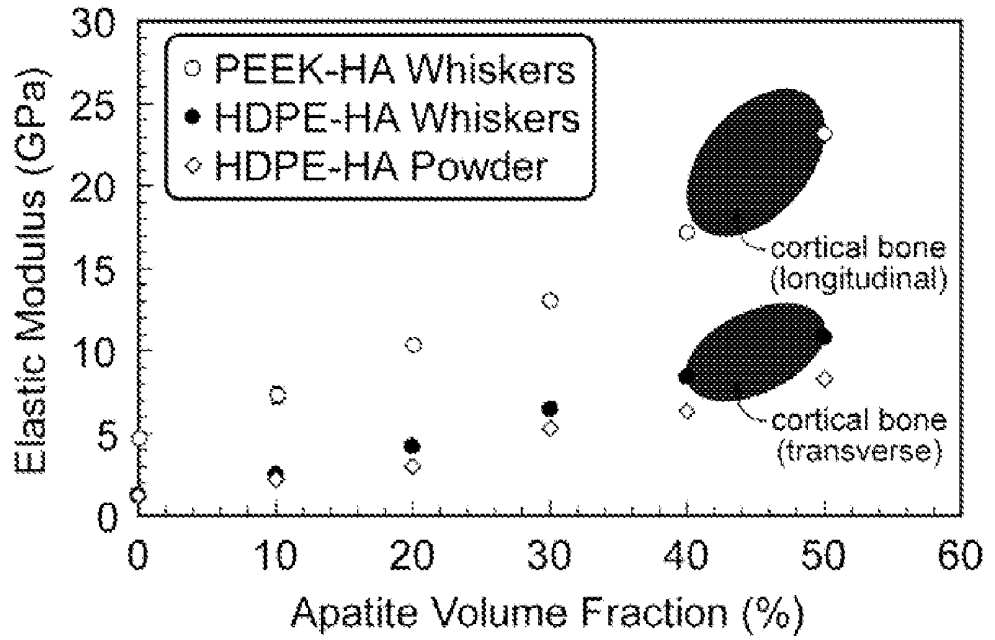


FIG. 3

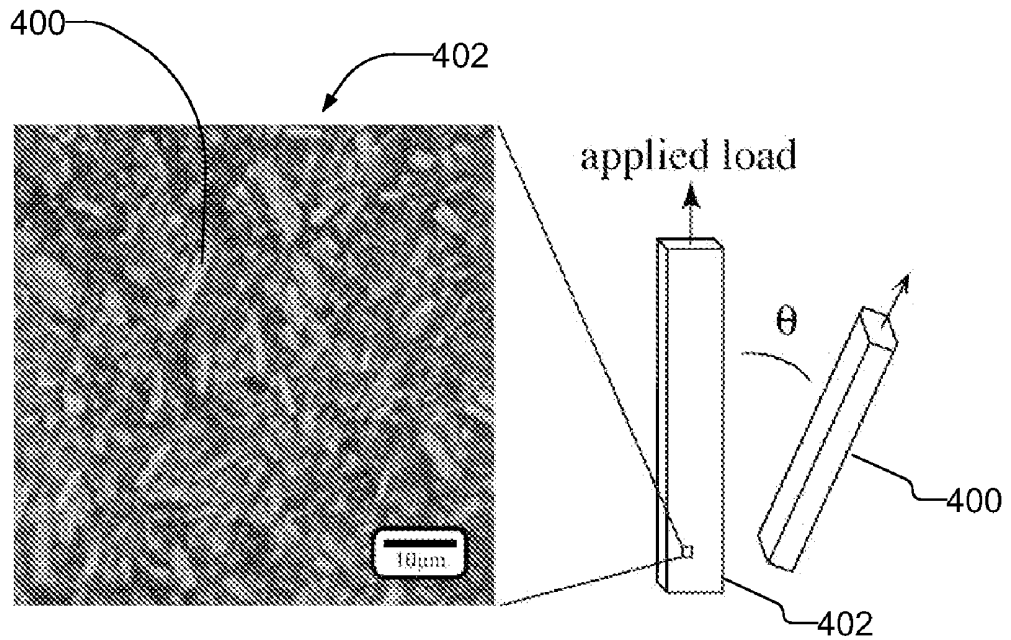


FIG. 4

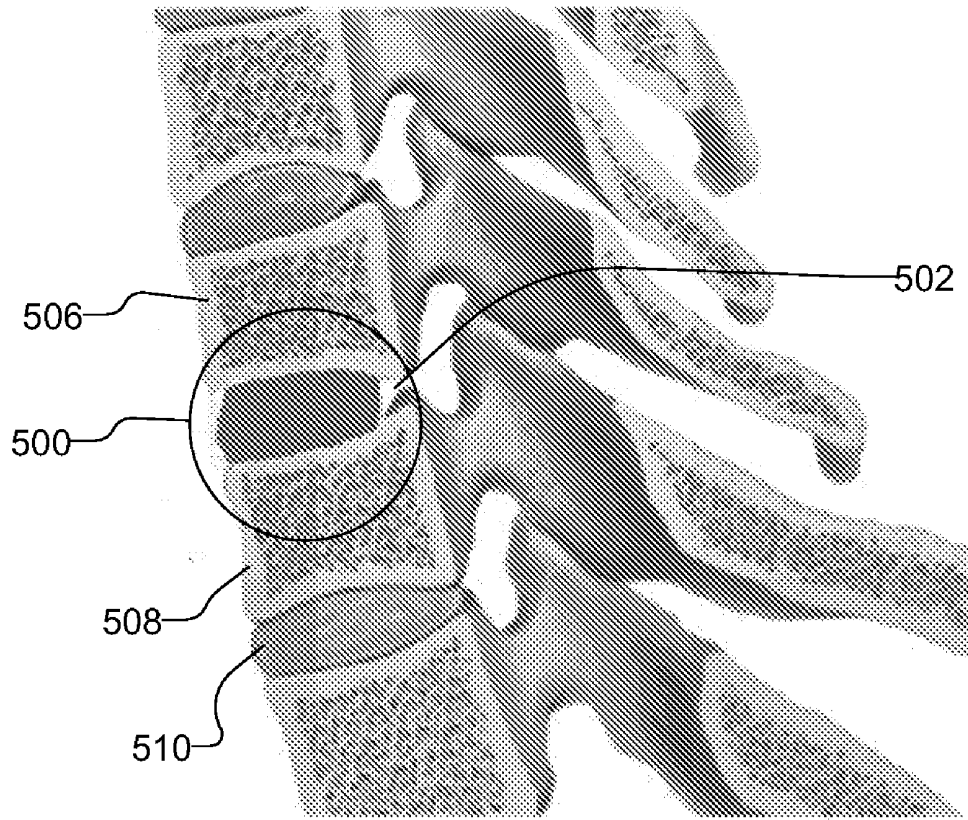


FIG. 5A
PRIOR ART

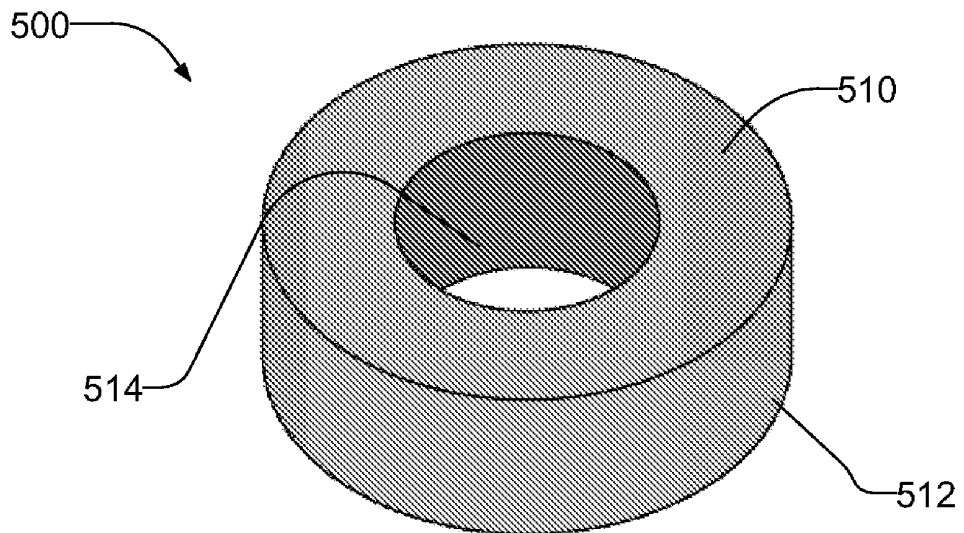


FIG. 5B
PRIOR ART

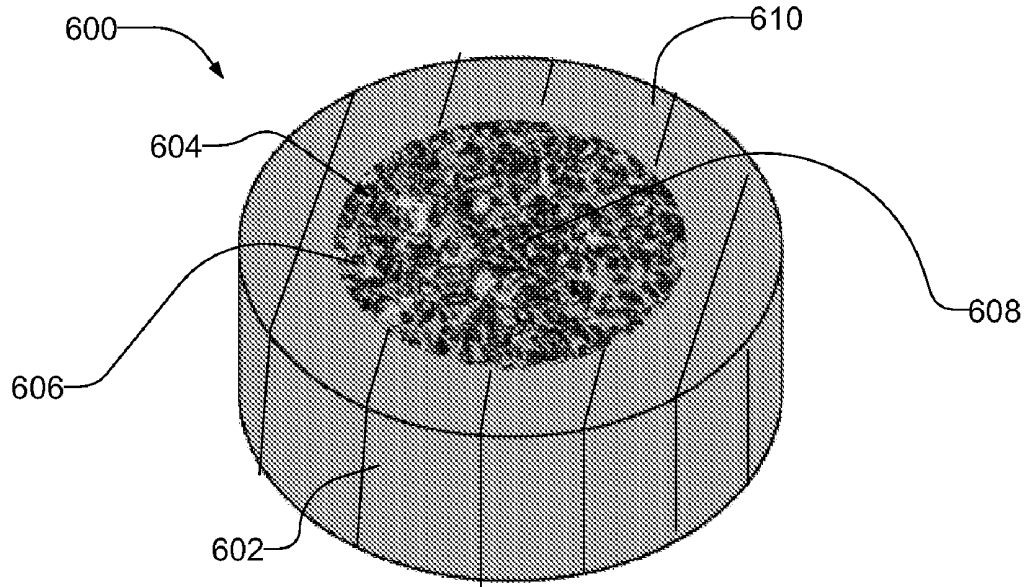


FIG. 6

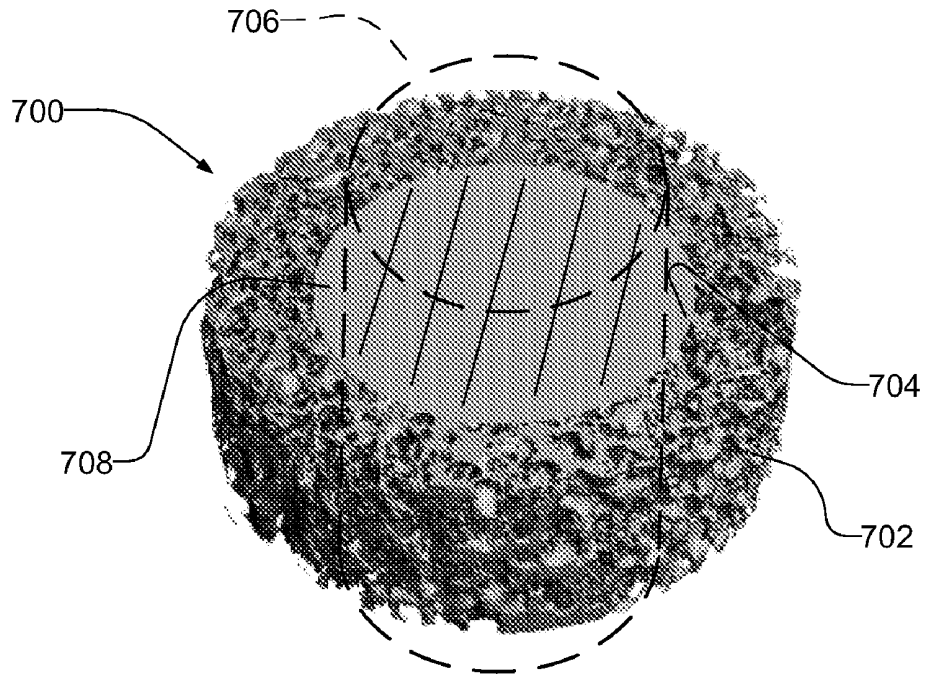


FIG. 7

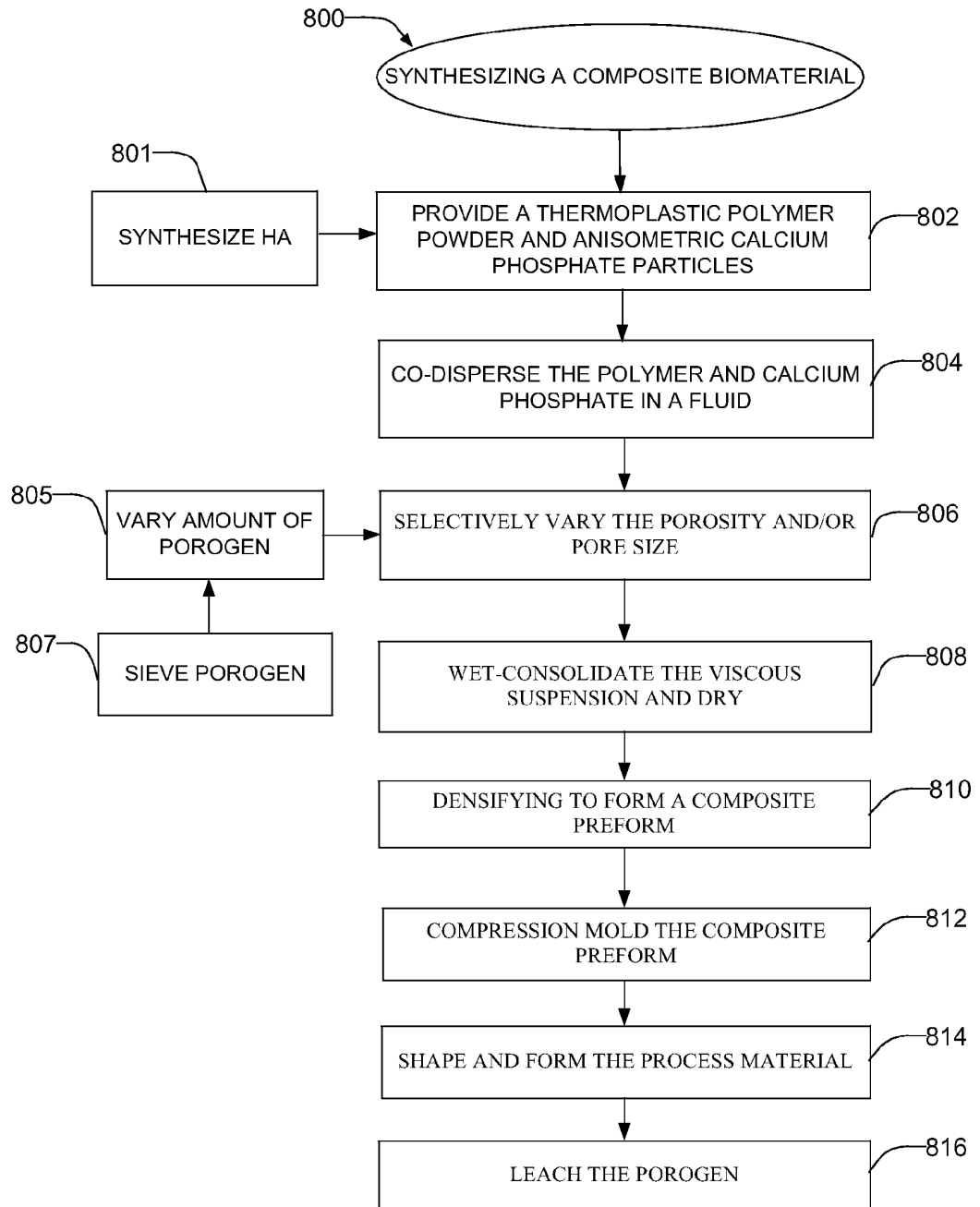


FIG. 8

US 2008/0206297 A1

Aug. 28, 2008

1

POROUS COMPOSITE BIOMATERIALS AND RELATED METHODS

[0001] This application claims the benefit of U.S. Provisional Patent Application Ser. No. 60/904,098, filed on Feb. 28, 2007, entitled "Reinforced Porous Polymer Scaffolds" and U.S. Provisional Patent Application Ser. No. 60/939,256, filed on May 21, 2007, entitled "Interbody Spinal Fusion Cages Containing Anisometric Calcium Phosphate Reinforcements and Related Methods," both of which are incorporated herein in their entireties.

FIELD OF THE DISCLOSURE

[0002] The present disclosure relates generally to composite biomaterials and more particularly to porous composite biomaterials and related methods.

BACKGROUND

[0003] Natural bone grafts such as autogenous bone grafts (autografts) are commonly used in procedures for repairing or replacing bone defects because they provide good structural support and osteoinductivity. Natural bone grafts involve removing or harvesting tissue from another part of a host's body (e.g., typically from the iliac crest, hip, ribs, etc.) and implanting the harvested tissue in the defect site. Not only do these grafts require an added surgical procedure needed to harvest the bone tissue, these grafts have limitations, including for example, transplant site morbidity. One alternative to autografts is allografts, which involve removing and transplanting tissue from another human (e.g., from bone banks that harvest bone tissue from cadavers) to the defect site. However, allografts are known to induce infection and immunotoxicity, suffer from limited supply and variability, and have a lessened effectiveness because the cells and proteins that promote bone growth are lost during the harvesting process (e.g., during cleansing and disinfecting process). Demineralized bone matrix (DBM) is typically used to induce bone growth at defect sites, but DBM lacks the mechanical properties (e.g., stiffness, strength, toughness, etc.) necessary to be considered a viable option for load-bearing applications.

[0004] Synthetic bone substitute materials have been researched in the treatment of diseased bone (e.g., osteoporosis), injured bone (e.g., fractures), or other bone defects in lieu of natural bone grafts. Synthetic bone substitutes are viable alternatives to the more traditional methods described above. However, synthetic substitute materials used to repair diseased bones and joints should function or perform biologically and mechanically (i.e., as the structural support role of the bone itself) by, for example, mimicking the density and overall physical structure of natural bone to provide a framework for ingrowth of new tissue. One type or application of a synthetic bone substitute is a scaffold, which provides support for bone-producing cells. Scaffolds may be biodegradable, which degrade in vivo, or they may be non-biodegradable to provide permanent implant fixation (e.g., spinal fusion cages). In addition, scaffolds are typically biocompatible, and some may be bioactive, bioresorbable, osteoconductive, and/or osteoinductive. The shapability, deliverability, cost, and ability to match the mechanical properties of the surrounding host tissue are other factors that vary among different types of scaffolds and other bone substitutes.

[0005] Problems may arise when there is a mechanical mismatch between the bone substitute and the surrounding tissue. For example, metallic implants and dense ceramics have mechanical properties that are typically an order of magnitude greater than the bone tissue. As a result, a stiff metal bone substitute implant acts to "shield" the adjacent bone tissue from mechanical stresses, resulting in a weakened bone at the bone-implant interface. Furthermore, efforts to utilize porous ceramics or polymer bone cement in place of stiffer materials have been limited. For example, ceramics possess low fracture toughness, thereby making the orthopedic implant brittle (i.e., susceptible to fracture). Polymers are limited by higher compliance and lower strength, thereby limiting their ability to support physiological load levels. Additionally, conventional orthopedic implant biomaterials are not osteoconductive and bioactive, resulting in a lack of bonding between the implant and the peri-implant tissue.

BRIEF DESCRIPTION OF THE DRAWINGS

- [0006] FIG. 1A is a perspective view of an example porous composite material described herein.
- [0007] FIG. 1B is a cross-sectional view of a portion of the example porous composite material of FIG. 1A.
- [0008] FIG. 2A-2C are scanning electron micrographs of a portion of the example porous composite material shown in increasing magnification.
- [0009] FIG. 3 is graphical representation of the elastic modulus of example apatite reinforced polymer composites versus the reinforcement volume fraction.
- [0010] FIG. 4 shows scanning electron micrograph of a portion of the surface of an example composite material reinforced with calcium phosphate whiskers embedded within and exposed on the surface, and schematically showing the orientation of the whiskers relative to the loading direction of the material or scaffold strut.
- [0011] FIG. 5A is a schematic illustration of a known spinal fusion cage inserted between spinal vertebrae.
- [0012] FIG. 5B illustrates the example known spinal fusion cage of FIG. 5A.
- [0013] FIG. 6 illustrates another example scaffold described herein.
- [0014] FIG. 7 illustrates yet another example scaffold described herein.
- [0015] FIG. 8 is a flow diagram illustrating an example process of creating an example composite material apparatus described herein.

DETAILED DESCRIPTION

[0016] In general, the example methods, apparatus, and materials described herein provide a biocompatible, bioactive synthetic porous composite for use as synthetic bone substitute materials. The synthetic composite may provide a synthetic porous scaffold for use as an orthopedic implant and/or be injectable via percutaneous or surgical injection to cure in vivo. Because the example composite material is used to form a scaffold or matrix that is used in an implantable device, the descriptions of one or more of these structures may also describe one or more of the other structures. The synthetic porous composites are tailored to mimic biological and mechanical properties of bone tissue for implant fixation, synthetic bone graft substitutes, tissue engineering scaffolds, interbody spinal fusion, or other orthopedic applications. An example porous composite material described herein reduces

subsidence and/or bone resorption resulting from mechanical mismatch problems between a synthetic scaffold of an implant device and the peri-implant tissue. Additionally, porosity and/or the pore sizes of the example synthetic composite are tailorable to specific applications to effectively promote the vascularization and growth of bone in the pores and/or void spaces of the example scaffolds, thereby improving bonding between the scaffolds and peri-implant tissue.

[0017] The example composite material or scaffolds are synthesized or made through a process that enables reinforcement particles to be integrally formed with or embedded within polymer matrices. In this manner, the polymer matrices embedded with the reinforcement material provide improved material properties (e.g., stiffness, fatigue strength, and toughness). The reinforcement particles are also exposed on a surface of the matrices, which promotes bioactivity and/or bioresorption. Additionally, the process provides flexibility to tailor the level of reinforcement particles and porosity for a desired application. For example, a porogen material may be used to vary the porosity, while the pore size is tailored by, for example, sieving the porogen to a desired size.

[0018] By varying the volume of the reinforcement particles and the porosity of the example scaffold, the mechanical properties (e.g., stiffness, strength, toughness, etc.) of the example scaffold of the implant device may be tailored to match those of the adjacent peri-implant bone tissue to reduce mechanical mismatch problems. Reducing mechanical mismatch provides a decreased risk of subsidence, stress shielding, bone resorption, and/or subsequent failure of adjacent peri-implant bone tissue. Additionally, the example scaffold of the implant device may include a significantly high porosity to promote bone ingrowth, while exhibiting significantly higher effective mechanical properties such as, for example, the mechanical properties of trabecular bone.

[0019] In particular, the example composite material includes a continuous porous biocompatible matrix having a thermoplastic polymer matrix reinforced with anisometric calcium phosphate particles. More specifically, in one example, a composite material includes a polyetheretherketone (PEEK) or a polyetherketoneketone (PEKK) matrix reinforced with various volume fractions of hydroxyapatite (HA) whiskers (e.g., 20 or 40 volume percent), wherein the matrix is approximately between 70% and 90% porous. In another example, the porous matrix includes a biocompatible, microporous polymer cage reinforced with anisometric calcium phosphate particles and bone morphogenic protein (BMP) such as, for example, rhBMP-2, which can be dispersed or accommodated by the void spaces and/or pores of the example porous scaffold and/or exposed on the surface of the example porous scaffold. Additionally, the BMP binds to the calcium phosphate further localizing the BMP to the surface of the scaffold or matrix.

[0020] The example composite materials described herein may be used for applications such as, for example, synthetic bone graft substitutes, bone ingrowth surfaces applied to existing implants, tissue engineering scaffolds, interbody spinal fusion cages, etc. In each of the applications, carrier materials (e.g., collagen, hydrogels, etc.) containing growth factors, such as BMP, may be incorporated into the pore space of the scaffold of the implant device to further enhance osteoinduction and/or osteoconduction to promote osteointegration.

[0021] Human bone tissues exhibit substantial variation in mechanical properties depending on the tissue density and

microstructure. The properties are highly dependent on anatomic location and apparent density of the measured specimen. For example, a femur includes a cortical bone that has a relative porosity on the order of about 5-15%, and a trabecular bone that has a porosity on the order of about 75-95%. Due to the highly significant porosity differences, the trabecular bone exhibits significantly lower effective mechanical properties compared to the cortical bone. Therefore, depending on the application, synthetic composite materials for use as scaffolds and/or spinal fusion cages or other implant devices should possess the mechanical properties exhibited by the cortical bone or the trabecular bone, but must also have effective porosity to promote bone growth.

[0022] To avoid the mechanical mismatch problems, such as stress shielding, the example scaffold of the implant device described herein may be tailored to substantially match or mimic the mechanical properties (e.g., stiffness, strength, toughness, etc.) of the adjacent and/or substituted bone tissue. Several factors may be varied during the synthesis of the composite material and scaffold of the implant device to tailor the mechanical properties including the calcium phosphate reinforcement volume fraction, aspect ratio, size and orientation; the polymer; and the size, volume fraction, shape and directionality of the void space and/or porosity. Tailoring the mechanical properties of the scaffold reduces the likelihood of mechanical mismatch leading to a decreased risk of subsidence, stress shielding, bone resorption and/or subsequent failure of adjacent vertebrae.

[0023] FIG. 1A illustrates the example synthetic porous composite material **100** described herein. FIG. 1B is a cross-sectional view of a portion of the example porous composite material **100** of FIG. 1A. The example synthetic composite material **100** provides a synthetic porous scaffold **101** for use or in as an orthopedic implant.

[0024] The example synthetic porous composite material **100** includes a porous thermoplastic polymer (e.g., a PEEK polymer) matrix **102** having anisometric calcium phosphate reinforcement particles **104** integrally formed or embedded with the matrix **102** and/or exposed on a surface of the matrix. In this manner, the polymer matrix **102** embedded with the reinforcement particles **104** provides high material strength, and the reinforcement particles **104** exposed on the surface of the matrix **102** promote bioactivity and/or bioresorption. The porous polymer matrix **102** includes a substantially continuous porosity and a plurality of pores **106** to enable bone ingrowth into the porous matrix **102**. In addition, the matrix **102** is substantially continuously interconnected via a plurality of struts **108**. Furthermore, at least one of the plurality of struts **108** may be a load-bearing strut.

[0025] FIGS. 2A-2C are scanning electron micrographs showing increasing magnification of a portion of an example scaffold **200** with struts **202**. The example scaffold **200** is a PEEK scaffold reinforced with 40% by volume HA whiskers **204**. FIG. 2A illustrates the architecture or matrix **206** of the scaffold **200** and FIG. 2B illustrates an enlarged portion of the struts **202**. In the illustrated example, the HA whiskers **204** are integrally formed and/or embedded within the matrix **206** of the scaffold **200** for reinforcement. The HA whiskers **204** are also exposed on a surface **208** of the matrix of the scaffold **200** for bioactivity and/or bioresorption, as noted above. As shown in FIG. 2C, the HA whiskers **204** are aligned in a sheet texture and are exposed on the surface **208** of the struts **202**.

[0026] The thermoplastic polymer of the example scaffolds described herein may be a biodegradable polymer for syn-

thetic bone graft substitute applications, or nonbiodegradable for implant fixation applications. The thermoplastic polymer includes a continuous matrix of a composite material and is biocompatible and/or bioresorbable as described above. Additionally or alternatively, the polymer may be a radiolucent polymer, bioresorbable (i.e., a material capable of being resorbed by a patient under normal physiological conditions) and/or non-bioresorbable, as desired. Further, the thermoplastic polymer matrix may include a polymer suitable for injection via percutaneous or surgical injection so that the composite material **100** cures in vivo.

[0027] Suitable non-resorbable polymers include, without limitation, polyaryletherketone (PAEK), polyetheretherketone (PEEK), polyetherketoneketone (PEKK), polyetherketone (PEK), polyethylene, high density polyethylene (HDPE), ultra high molecular weight polyethylene (UHMWPE), low density polyethylene (LDPE), polyethylene oxide (PEO), polyurethane, polypropylene, polypropylene oxide (PPO), polysulfone, polypropylene, copolymers thereof, and blends thereof. Suitable bioresorbable polymers include, without limitation, poly(DL-lactide) (PDLA), poly(L-lactide) (PLLA), poly(glycolide) (PGA), poly(ϵ -caprolactone) (PCL), poly(dioxanone) (PDO), poly(glyconate), poly(hydroxybutyrate) (PHB), poly(hydroxyvalerate) (PHV), poly(orthoesters), poly(carboxylates), poly(propylene fumarate), poly(phosphates), poly(carbonates), poly(anhydrides), poly(iminocarbonates), poly(phosphazenes), copolymers thereof, and blends thereof. Suitable polymers that are injectible via percutaneous or surgical injection that cure in vivo include, without limitation, polymethylmethacrylate (PMMA), and other polyacrylics from monomers such as bisphenol A hydroxypropylmethacrylate (bis-GMA) and/or tri(ethylene glycol) dimethacrylate (TEG-DMA).

[0028] Although synthetic substitute composite materials made of polymers satisfy the functional criteria of an implantable device because they are, for example, formable and inexpensive, polymers alone lack biological efficacy to promote bone growth and/or may lack requisite mechanical properties to support load levels. To increase the mechanical properties of the polymers, the polymers are reinforced with calcium phosphates. The aspect ratio, size, volume fraction and degree of preferred orientation of the calcium phosphate particles **104** (e.g., HA whisker particles) may be tailored for the desired material properties and implant performance. For example, consider the information presented in FIG. 3, which is a graphical illustration of the elastic modulus of HA whisker and powder reinforced polymer composite materials versus the volume fraction percentage of the apatite calcium phosphates that is mixed with the polymer matrix. The shaded areas of FIG. 3 show approximate regions for the given mechanical property of the human cortical bone tissue. As depicted in the graph, the elastic modulus of the composite materials increases with increasing HA content. In addition, increasing the level of HA reinforcement in polymer composites increases cellular activity during osteointegration.

[0029] The calcium phosphate reinforcement particles **104** may be in the form of single crystals or dense polycrystals, but are at least in some portion anisometric. "Anisometric" refers to any particle morphology (shape) that is not equiaxed (e.g., spherical), such as whiskers, plates, fibers, etc. Anisometric particles are usually characterized by an aspect ratio. For example, HA single crystals are characterized by the ratio of dimensions in the c- and a-axes of the hexagonal crystal structure. Thus, the anisometric particles in the present dis-

closure have an aspect ratio greater than 1. In one example, the mean aspect ratio of the reinforcement particles is from about 1 to about 100. By further example, the reinforcement particles can be provided in an amount of from about 1% by volume of the composite biomaterial to about 60% by volume, and for example, from about 20% by volume of the composite to about 50% by volume.

[0030] Due to their morphology, the calcium phosphate reinforcements particles **104** may be oriented in bulk or near the surface of the polymer matrix **102** to provide directional properties, if desired. For example, if the reinforcement particles **104** are predominately aligned within the matrix **102** the morphological alignment of the particles **104** provides anisotropy for the overall composite **100**, which can be tailored to be similar to the anisotropic mechanical properties of bone tissues. For example, FIG. 4 shows a micrograph of anisometric calcium phosphate reinforcement **400** on the surface of a dense composite polymer matrix **402**. Also shown in FIG. 4 is a schematic illustration of a portion of matrix **402** and illustratively showing the orientation of the reinforcement particles **400** relative to the loading direction of the material and/or a scaffold strut, which is, for example, at an angle θ .

[0031] Furthermore, there are no limits on the size or amount of the calcium phosphate particles **104** in matrix **102**, provided that the calcium phosphate particles **104** are dispersed within and/or exposed at the surface of the polymer matrix **102**. For example, the reinforcement particles **104** may have a maximum dimension from about 20 nm to about 2 mm, and for example, between 20 nm to about 100 μ m. While both nano- and micro-scale calcium phosphate particles improve the mechanical properties of the example synthetic composite material **100** described herein, nano-scale calcium phosphate particles are particularly effective for enhancing bioresorbability and cell attachment, and micro-scale particles are particularly effective for obtaining a uniform dispersion within the matrix **102**.

[0032] Suitable calcium phosphates may include, without limitation, calcium HA, HA whiskers, HA, carbonated calcium HA, beta-tricalcium phosphate (beta-TCP), alpha-tricalcium phosphate (alpha-TCP), amorphous calcium phosphate (ACP), octacalcium phosphate (OCP), tetracalcium phosphate, biphasic calcium phosphate (BCP), anhydrous dicalcium phosphate (DCPA), dicalcium phosphate dihydrate (DCPD), anhydrous monocalcium phosphate (MCPA), monocalcium phosphate monohydrate (MCPM), and combinations thereof.

[0033] As described above, a synthetic composite material **100** not only bears physiological levels of load, but also promotes osseointegration—the direct structural and functional connection between the living bone and the surface of the load-bearing implant. The bioactive calcium phosphate particles **104** (e.g., HA whiskers) exposed on the surface of the example porous matrix **102** promote a stable bone-implant interface. Osteointegration also requires the vascularization and growth of bone into an implant via interconnected and/or continuous porosity.

[0034] Thus, the size, volume fraction, shape, and directionality of the void spaces and/or pores **106** may be tailored to optimize osteoconduction and implant mechanical properties. The pores **106** may be any size or shape, while maintaining a continuous network to promote a fusion through the formation of new bone tissue in the void spaces and/or pores **106**. For example, the pores **106** may be present throughout

the matrix **102** as illustrated in FIG. 1A. Also, the pores **106** may be functionally graded in any material or implant direction, for example, radially, as shown in FIGS. 6 and 7, from a highly porous region to a relatively dense region, or may include a void space. The change in porosity from one region to another may be very distinct, for example as shown in FIGS. 6 and 7, or gradual. Furthermore, the graded change may be uniform or variant. In addition, instead of a graded change there may be a combination of materials having two or more densities of pores. The central void may be any shape or size, and may receive (e.g., be filled) a material, a structure, or the composite material **100** (i.e., the composite material graded from the porous outer surface to a dense center), thereby forming a porous outer perimeter and a dense central region. Examples are further described in connection with FIGS. 6 and 7 below.

[0035] As discussed in greater detail below, the porosity and/or pore sizes **106** may be selectively formed by the inclusion of, for example, a porogen material during synthesis of the composite material **100**. Pores spaces may range from about 100 Mm to about 500 Mm, and, for example, from about 250 Mm to about 500 Mm. The example composite biomaterial **100** may additionally contain some fraction of microporosity within scaffold struts that is less than about 10 Mm in size. The total amount of porosity within porous regions may range from about 1% to about 90% by volume, and, for example, between about 70% and 90% by volume. However, the porosity may also be tailored via other processes such as, for example, microsphere sintering, fiber weaving, solvent casting, electrospinning, freeze drying (lyophilization), thermally induced phase separation, gas foaming, and rapid prototyping processes such as, for example, solid freeform fabrication, robotic deposition (aka, robocasting), selective laser sintering, fused deposition modeling, three-dimensional printing, laminated object manufacturing, stereolithography, etc., or any other suitable process(es) or combination(s) thereof.

[0036] Additionally, the example composite material **100** may optionally include additives, if desired. For example, the composite material **100** may include one or more surface-active agents to enhance interfacial bonding between the reinforcement particles **104** and the polymer matrix **102**. The void spaces and/or pores **106** may accommodate and deliver one or more growth factors such as, for example, BMP, to enhance osteoinductivity and/or bone regeneration. Furthermore, the void spaces and/or pores **106** may also accommodate and deliver one or more transcription factors, matrix metalloproteinases, peptides, proteins, bone cells, progenitor cells, blood plasma, bone marrow aspirate, or combinations thereof, to improve or speed bone regeneration, or resorption and replacement of the biomaterial. In some examples, the void spaces and/or pores **106** may further accommodate a carrier material that may be incorporated into the void spaces and/or pores **106**. The carrier material may include, for example, a collagen sponge, membrane, or a hydrogel material to deliver the growth factor material such as, for example, the BMP. The calcium phosphate reinforcements **104** exposed on the surface of the porous matrix **102**, along with the porosity, improves the retention of the BMP within the matrix **102** and at the peri-implant interface.

[0037] FIG. 5A is an illustration showing a known interbody spinal fusion cage **500**. The example spinal fusion cage **500** is implanted in the inter-vertebral space **502** between two adjacent vertebrae **506** and **508**. A disc **510**, due to degenera-

tion, herniation, etc., is typically removed and replaced by the spinal fusion cage **500**. The spinal fusion cage **500** is used to support or restore vertebral height, and, thus, stabilize or retain adjacent vertebrae **506** and **508** in a desired position. Additionally, the spinal fusion cage **500** is to promote fusion between the vertebrae **506** and **508**.

[0038] FIG. 5B is an enlarged illustration of the known spinal fusion cage **500** of FIG. 5A. A typical spinal fusion cage **500** includes a body **510** having a dense outer region **512** and a void **514** at its center. The dense outer surface **512** may be made of PEEK, titanium, or other material that can be used to support the vertebrae **506** and **508**. However, the spinal fusion cage **500** made of a PEEK, titanium, etc., cannot attach to the bone. Thus, to promote bone ingrowth, the center void **514** is typically provided with a packing material (not shown) such as, a natural bone graft, a collagen sponge that retains bone growth factors, or the spinal fusion cage **500** is coated with the bone growth factors or other agents that promote osteoinduction.

[0039] The example porous scaffold **101** having the composite material **100** described herein, and with respect to FIG. 1A, can be implemented with the spinal fusion cage **500** of FIGS. 5A and 5B to replace the packing materials, such as natural bone graft. As noted above, the porous scaffold **101** promotes bone ingrowth and the pores **106** may accommodate or deliver for example, a BMP, to further improve rate of growth (fusion rate). Furthermore, the calcium phosphate (e.g., HA whisker) binds to the body **510** and localizes the BMP within the central void **514**, which further promotes osteointegration.

[0040] FIG. 6 illustrates another example scaffold or matrix **600** implemented with the example composite material **100** described herein. The example scaffold **600** may be implemented as an interbody spinal fusion cage. The scaffold **600** includes a body **602** having a porous polymer matrix **604** integrally formed or embedded with anisometric calcium phosphate particles **606**. Furthermore, the matrix **604** of the example scaffold **600** includes a radiolucent polymer (e.g., PEEK) integrally formed or embedded with anisometric calcium phosphate reinforcements **606** such as, for example, HA whiskers. The radiolucent polymer provides improved radiographic analysis of fusion following implantation. The example scaffold **600** may also include a BMP such as, for example, rhBMP-2. In another example, the example scaffold **600** is a biocompatible, microporous polymer scaffold or matrix supplemented with anisometric calcium phosphate reinforcements and BMP.

[0041] Additionally, the example scaffold **600** may be formed so that the pores are functionally graded in any material or implant direction such as, for example, radially, as shown in FIG. 6, from a highly porous center or central region **608** to relatively dense outer region or surface **610**. The change in porosity from one region to another may be distinct or gradual from the central region **608** to the outer region **610**. Further, the graded change may be uniform or variant. The dense outer region **610** provides structural integrity along with the advantages of the composite material **100** described herein. In the illustrated example, the porous structure **604** has pore sizes that range between about 100 Mm and about 500 Mm, and preferably, between about 250 Mm and about 500 Mm, and a porosity that ranges between about 1% to about 90%. Furthermore, the spinal fusion cage material **600** may include microporosity having pore sizes less than about 10 μ m.

[0042] FIG. 7 illustrates another example scaffold 700. The porous scaffold 700 includes a porous matrix 702 having the composite material 100 described herein. The porous scaffold 700 includes a center or central void 704 that may be any shape or size. Additionally or alternatively, the central void 704 may receive a material 706, a stem, or any other substance or structure, illustratively depicted by dashed lines. For example, the central void 704 may receive a stem 706 (e.g., an implant) such as, for example, a titanium stem, a dense composite stem (e.g., a PEEK composite stem), or any other suitable material or structure.

[0043] Additionally, in other examples, the scaffold 700 is formed so that the pores are functionally graded in any material or implant direction, for example, radially as shown in FIG. 7, from a the high porous outer region or surface 702 to a relatively dense center or central region 708. The change in porosity from one region to another may be distinct or gradual from the central region 708 to the highly porous outer region 702. Further, the graded change may be uniform or variant. In this manner, the example scaffold 700 forms a porous perimeter having a dense core, where the material is continuous from the porous perimeter to the dense core. The dense central region 708 provides structural integrity along with the advantages of the composite material 100 described herein. In the illustrated example, the porous matrix 702 and the dense central region 708 may have pore sizes that range between about 100 μm and about 500 μm , and preferably, between about 250 μm and about 500 μm , and a porosity that ranges between about 1% to about 90%. Furthermore, the spinal fusion cage 700 may include a microporosity having pore sizes less than about 10 μm .

[0044] In other examples, the composite material 100 and/or the scaffolds 101, 600, 700 may also include a roughened surface such as, for example, serrated teeth, that come into direct contact with the adjacent peri-implant tissue to prevent movement relative to the peri-implant tissue after implantation. Additionally or alternatively, although not shown, the scaffolds 101, 600, 700 may include holes, notches, pins, radiographic markers, or other features that may be gripped or otherwise used for positioning of the scaffolds 101, 600, 700 by minimally invasive surgical tools and procedures.

[0045] The example composite material 100 and/or the scaffolds 101, 600, 700 may be manufactured by methods common to reinforced thermoplastic and thermosetting polymers, including but not limited to injection molding, reaction injection molding, compression molding, transfer molding, extrusion, blow molding, pultrusion, casting/potting, solvent casting, microsphere sintering, fiber weaving, solvent casting, electrospinning, freeze drying (lyophilization), thermally induced phase separation, gas foaming, and rapid prototyping processes such as solid freeform fabrication, robotic deposition (aka, robocasting), selective laser sintering, fused deposition modeling, three-dimensional printing, laminated object manufacturing, stereolithography, etc., or any other suitable process(es) or combination(s) thereof.

[0046] FIG. 8 is a flowchart of an example method 800 that may be used to synthesize the example composite material 100 and/or scaffolds 101, 600, 700 described herein. While an example manner of synthesizing the example composite material 100 and/or scaffolds 101, 600, 700 has been illustrated in FIG. 8, one or more of the steps and/or processes illustrated in FIG. 8 may be combined, divided, re-arranged, omitted, eliminated and/or implemented in any other way. Further still, the example method of FIG. 8 may include one

or more processes and/or steps in addition to, or instead of, those illustrated in FIG. 8, and/or may include more than one of any or all of the illustrated processes and/or steps. Further, although the example method is described with reference to the flow chart illustrated in FIG. 8, persons of ordinary skill in the art will readily appreciate that many other methods of synthesizing the example composite material 100 and/or scaffolds 101, 600, 700 may alternatively be used.

[0047] The composite material 100 and/or the scaffolds 101, 600, 700 are processed using a powder processing approach in conjunction with compression molding and particle leaching techniques and is particularly suited for achieving a high concentration (e.g., >40 vol %) of well-dispersed (and aligned, if desired) anisometric calcium phosphate reinforcements (e.g., HA whiskers) in a thermoplastic matrix (e.g., PEEK) with minimal degradation of the calcium phosphate size/shape during processing. In this manner, the calcium phosphate reinforcement volume fraction, aspect ratio, size and orientation; the polymer; and the size, volume fraction, shape and directionality of the void space and/or porosity may be tailored to vary the mechanical properties of the composite material 100 and/or scaffolds 101, 600, 700.

[0048] A polymer such as, for example, PEEK, and anisometric calcium phosphate particles, such as HA whiskers, are provide in powder form (block 802). The PEEK polymer powder may have, for example, a mean particle size of about 26 μm . The HA whiskers may be synthesized (block 801) using, for example, the chelate decomposition method.

[0049] The PEEK powder and the synthesized HA whiskers are co-dispersed in a fluid (block 804) such as, for example ethanol, and mixed (block 804) using, for example, ultrasonication under constant stirring—forming a viscous suspension.

[0050] After the polymer powder and the HA whiskers are mixed, the porosity of the mixture is selectively varied and/or tailored (block 806). In one example, the porosity may be formed and tailored by the addition of a suitable porogen material such as, for example, NaCl, wax, polysaccharides (sugars), cellulose, etc. The extent of the porosity can be controlled by varying the amount of porogen used (block 805), while the pore size could be tailored by sieving the porogen (block 807) to a desired size prior to mixing the porogen with the polymer mixture. In another examples, the porosity and/or the pore size of the polymer matrix may be selectively varied using any other suitable methods and/or process(es) such as, for example, microsphere sintering, fiber weaving, solvent casting, electrospinning, freeze drying (lyophilization), thermally induced phase separation, gas foaming, or rapid prototyping processes such as, for example, solid freeform fabrication, robotic deposition (aka, robocasting), selective laser sintering, fused deposition modeling, three-dimensional printing, laminated object manufacturing, stereolithography, etc., or any other suitable process(es) or combination(s) thereof.

[0051] The viscous suspension is wet-consolidated (block 808) by, for example, vacuum filtration and drying to remove any residual fluid (i.e., ethanol). The composite mixture is densified (block 810) by, for example, uniaxial compression, to form a composite preform.

[0052] Following the initial densification, the preform is compression molded (block 812) and/or sintered at elevated temperatures (e.g., approximately 20° C. to 400° C.) sufficient to fuse the polymer particles with minimal damage to the calcium phosphate reinforcements. The process or com-

posite material may be heated to a desired processing temperature and the implant may be shaped or formed (block 814). Densifying and molding the composite material includes aligning the calcium phosphate reinforcement particles (e.g., HA whiskers) morphologically and/or crystallographically within the scaffold struts.

[0053] The scaffold may have any shape and/or size (e.g., any polygonal shape) and can be formed by methods common to reinforced thermoplastic and thermosetting polymers, including but not limited to injection molding, reaction injection molding, compression molding, transfer molding, extrusion, blow molding, pultrusion, casting/potting, solvent casting, and rapid prototyping processes such as, for example, solid freeform fabrication, robotic deposition (aka, robocasting), selective laser sintering, fused deposition modeling, three-dimensional printing, laminated object manufacturing, stereolithography, etc., or any other suitable process(es). The composite material 100 and/or the scaffolds 101, 600, 700, are formed by the mold walls and/or machining after molding.

[0054] The composite material undergoes a leaching process (block 816) to remove, for example, the porogen used during synthesis of the composite material. The leaching may occur, for example, via a dissolution method, heating method, and/or any other suitable methods and/or process(es). More specifically, dissolution may include immersing the scaffold in a fluid, such as, for example, deionized water.

[0055] Furthermore, viscous flow of the polymer/reinforcement mixture during molding can be designed to tailor the preferred orientation of the anisometric reinforcements in the implant. Additionally surface-active agents may be added during the mixing process and/or to the surface of the composite material to enhance interfacial bonding between reinforcement particles and the matrix.

[0056] The following example is provided to further illustrate the example apparatus and methods described herein and, of course, should not be construed as in any way limiting in scope. It is to be understood by one of ordinary skill in the art that the following examples are neither comprehensive nor exhaustive of the many types of methods and apparatus which may be prepared in accordance with the present disclosure.

[0057] In the example, commercially available PEKK and sodium chloride (NaCl) powders with mean particle sizes of 70 and 250 μm, respectively, were used as-received. HA whiskers were synthesized using the chelate decomposition method. The as-synthesized HA whiskers were measured by optical microscopy to have a mean length of 21.6 μm, width of 2.8 μm and aspect ratio of 7.6.

[0058] In the example, composite scaffolds with 75, 82.5 and 90% porosity were processed with 0-40 vol % HA whisker reinforcement. Appropriate amounts of polymer powder and HA whiskers were co-dispersed in ethanol via a sonic dismembrator and mechanical stirring at 1200 rpm. Following dispersion, the appropriate amount of the NaCl (i.e. porogen) was added to the suspension and mixed by hand using a Teflon coated spatula. The total scaffold volume consisted of the material volume plus the pore volume. Thus, the reinforcement level was calculated based the desired material volume, while the porosity level was calculated based on the total scaffold volume. After mixing, the viscous suspension was wet-consolidated using vacuum filtration. The powder mixture was dried overnight in a forced convection oven at 90° C. and densified at 125 MPa in a cylindrical pellet die using a hydraulic platen press. The die and densified powder mixture was heated in a vacuum oven to the desired processing temperature and transferred to a hydraulic platen press for compression molding. Scaffolds with 82.5 and 90% porosity were molded at 350° C., while scaffolds with 75% porosity were molded at 350, 365 and 375° C. A pressure of 250 MPa was applied to the die as the polymer solidified. After cooling to room temperature, the sintered composite pellet was ejected from the die and placed approximately 300 mL deionized water for at least 72 h to dissolve the NaCl crystals. The deionized water was changed daily. The as-molded composite scaffolds had a diameter of 1 cm and were machined to a height of 1 cm.

[0059] In the example, unconfined compression tests were performed to investigate the mechanical properties of the composite scaffolds. Specimens were tested on an electromagnetic test instrument in phosphate buffered saline (PBS) at 37° C. using a crosshead speed of 1 mm/min. Force-displacement data was used to calculate the elastic modulus, compressive yield stress (CYS), and failure strain of the composite scaffolds. One-way analysis of variance (ANOVA) was used to compare mechanical properties between experimental groups. The compressive properties of HA whisker reinforced PEKK scaffolds were tabulated in table 1.

[0060] The table below provides mechanical properties of the example PEKK scaffold reinforced with HA whiskers that was processed using a compression molding/particle leaching method such as, for example, the method 800 of FIG. 8 as implemented in the description above. The mechanical properties of HA whisker reinforced PEKK were evaluated in uniaxial compression. Tensile properties of the HA whisker reinforced PEKK scaffolds were evaluated prior to scaffold fabrication.

Porosity (%)	HA Content (Vol %)	Molding Temperature (° C.)	Elastic Modulus (MPa)	CYS (MPa)	Yield Strain (%)
75	0	350	69.5 (12.2)	1.25 (0.16)	5.7 (0.4)
75	0	365	100.7 (10.7)	2.04 (0.26)	4.4 (1.2)
75	0	375	95.6 (10.5)	2.55 (0.34)	4.4 (1.1)
75	20	350	106.3 (15.0)	1.28 (0.13)	3.7 (1.1)
75	20	365	115.4 (13.4)	1.77 (0.30)	2.9 (0.6)
75	20	375	141.1 (39.2)	2.28 (0.35)	2.9 (0.7)
75	40	350	54.0 (18.3)	0.52 (0.17)	2.2 (0.3)
75	40	365	84.3 (41.5)	1.15 (0.38)	2.7 (0.5)
75	40	375	120.2 (29.8)	1.65 (0.34)	2.3 (1.9)
82	40	350	15.7 (6.7)	0.13 (0.03)	2.6 (1.9)

US 2008/0206297 A1

Aug. 28, 2008

7

-continued

Porosity (%)	HA Content (Vol %)	Molding Temperature (° C.)	Elastic Modulus (MPa)	CYS (MPa)	Yield Strain (%)
90	0	350	0.75 (0.18)	0.15 (0.04)	30 (0.0)
90	40	350	0.23 (0.13)	0.04 (0.01)	30 (0.0)

[0061] As shown in the table, for a given reinforcement level, the compressive modulus decreased with increased porosity, and the yield strength decreased with increased porosity. Scaffolds with 0% vol % HA whisker reinforcement and 75% and 90% porosity exhibited moduli of 69.5 and 0.75 MPa, while scaffolds with 40 vol % HA whisker reinforcement and 75%, 82% and 90% porosity exhibited moduli of 54.0, 15.7 and 0.23 MPa, respectively. Scaffolds with 0 vol % HA whisker reinforcement and 75% and 90% porosity exhibited yield strengths of 1.25 MPa and 0.15 MPa, respectively. Scaffolds with 40 vol % HA whisker reinforcement and 75%, 82% and 90% porosity exhibited yield strengths of 0.52 MPa, 0.13 MPa and 0.04 MPa, respectively. The HA content also affected the modulus and failure strain of the scaffolds. A scaffold having 75% porosity and 20 vol % reinforcement HA whisker exhibited modulus of 106.3 MPa, compared to a modulus of 69.5 MPa for scaffolds with 0 vol % HA whisker reinforcement.

[0062] The example methods and apparatus described herein offer synthetic porous composite material that may be used for synthetic bone substitutes for implant fixation, fraction fixation, synthetic bone graft substitutes, interbody spinal fusion, tissue engineering scaffolds, or other applications. Many aspects of the of the porous composite material may be tailored to provide specific mechanical, biological, and surgical functions, such as, the polymer composition and molecular orientation, porosity and pore size of the porous matrix, or the HA reinforcement content, morphology, preferred orientation, and size.

[0063] Although the teachings of the present disclosure have been illustrated in connection with certain examples, there is no intent to limit the present disclosure to such examples. On the contrary, the intention of this application is to cover all modifications and examples fairly falling within the scope of the appended claims either literally or under the doctrine of equivalents.

What we claim is:

1. A porous composite material, comprising:
 - a thermoplastic polymer forming a porous matrix having continuous porosity and a plurality of pores, wherein the porosity and the size of the pores are selectively formed during synthesis of the composite material;
 - a plurality of anisometric calcium phosphate particles integrally formed, embedded in, or exposed on a surface of the porous matrix, wherein the calcium phosphate particles provide one or more of reinforcement, bioactivity, or bioresorption.
2. A porous composite material as described in claim 1, wherein the porosity and the size of the pores are selectively formed by the inclusion of a porogen material during synthesis of the composite material.
3. A porous composite material as described in claim 2, wherein the porogen material is leached from the composite material during the synthesis of the composite material.

4. A porous composite material as described in claim 1, wherein the porous matrix includes a plurality of composite struts.

5. A porous composite material as described in claim 4, wherein the plurality of composite struts form a continuous body of the porous scaffold apparatus.

6. A porous composite material as described in claim 1, wherein the pore sizes of the matrix range between 100 to 500 μm .

7. A porous composite material as described in claim 1, further comprising fractions of microporosity having a pore sizes less than 10 μm .

8. A porous composite material as described in claim 1, wherein the matrix porosity ranges between 1 to 95 percent by volume.

9. A porous composite material as described in claim 1, wherein the polymer comprises a non-degradable polymer.

10. A porous composite material as described in claim 1, wherein the polymer comprises a biosorbable or biodegradable polymer.

11. A porous composite material as described in claim 1, wherein the composite material is injectable to cure or harden in vivo.

12. A porous composite material as described in claim 1, wherein the polymer comprises polyaryletherketone, polyetheretherketone, polyetherketoneketone, polyetherketone, polyethylene, high density polyethylene, ultra high molecular weight polyethylene, low density polyethylene, polyethylene oxide, polyurethane, polypropylene, polypropylene oxide, polysulfone, polymethylmethacrylate, and other polyacrylics from monomers such as bisphenol A hydroxypropylmethacrylate (bis-GMA) and/or tri(ethylene glycol) dimethacrylate, polypropylene, poly(DL-lactide), poly(L-lactide), poly(glycolide), poly(ϵ -caprolactone), poly(dioxanone), poly(glyconate), poly(hydroxybutyrate), poly(hydroxyvalerate), poly(orthoesters), poly(carboxylates), poly(propylene fumarate), poly(phosphates), poly(carbonates), poly(anhydrides), poly(iminocarbonates), poly(phosphazenes), copolymers thereof, or blends thereof.

13. A porous composite material as described in claim 1, wherein the calcium phosphate reinforcement particles comprise single crystals or dense polycrystals.

14. A porous composite material as described in claim 1, wherein the reinforcement particles have a mean aspect ratio (length along c-axis/length along a-axis) of greater than 1 and less than 100.

15. A porous composite material as described in claim 1, wherein the size of the reinforcement particles ranges between 20 nm and 2 mm.

16. A porous composite material as described in claim 1, wherein the reinforcement particle volume fraction is between 1 and 60 percent by volume.

17. A porous composite material as described in claim 1, wherein at least a portion of the calcium phosphate reinforcement particles are shaped like whiskers.

18. A porous composite material as described in claim 1, wherein at least a portion of the calcium phosphate reinforcement particles are shaped like platelets.

19. A porous composite material as described in claim 1, wherein the anisometric calcium phosphate particles comprises hydroxyapatite, hydroxyapatite whiskers, carbonated calcium hydroxapatite, beta-tricalcium phosphate (beta-TCP), alpha-tricalcium phosphate (alpha-TCP), amorphous calcium phosphate (ACP), octacalcium phosphate (OCP), tetracalcium phosphate, biphasic calcium phosphate (BCP), anhydrous dicalcium phosphate (DCPA), dicalcium phosphate dihydrate (DCPD), anhydrous monocalcium phosphate (MCPA), monocalcium phosphate monohydrate (MCPM), or combinations thereof.

20. A porous composite material as defined in claim 1, further comprising a carrier material containing a growth factor agent, wherein the carrier material and growth factor material are incorporated into the pore space of the porous matrix.

21. A method of forming an porous composite material, the method comprising:

- providing a thermoplastic polymer powder and anisometric calcium phosphate particles;
- mixing the polymer powder and the calcium phosphate particles with a fluid;
- selectively varying the porosity and/or the pore size;
- consolidating and drying the mixture;
- deforming or densifying the mixture under uniaxial compression to form the porous composite; and
- leaching a material from the porous composite.

22. A method as described in claim 21, wherein selectively varying the porosity comprises adding a porogen material to the mixture.

23. A method as described in claim 22, wherein selectively varying the size of the pores comprises sieving the porogen material to a desired size prior to mixing.

24. A method as described in claim 22, wherein leaching a material from the porous composite comprises leaching the porogen material from the porous composite.

25. A method as described in claim 21, wherein deforming or densifying the mixture comprises compression molding the mixture to form the porous composite.

26. A method as described in claim 21, further comprising selectively varying the mechanical properties of the implant device by varying the calcium phosphate reinforcement vol-

ume fraction, aspect ratio, size and orientation, the amount of the polymer powder, or the size, volume fraction, shape and directionality of the void space and/or porosity of the implant device.

27. The method as described in claim 21, further comprising adding a surface-active agent.

28. An implantable orthopedic device, comprising:

a porous body, wherein the body comprises a thermoplastic polymer forming a porous matrix having continuous porosity and a plurality of pores, wherein the porosity and the size of the pores are selectively formed during synthesis of the composite material, and a plurality of anisometric calcium phosphate particles integrally formed, embedded in, or exposed on a surface of the porous matrix, wherein the calcium phosphate particles provide one or more of reinforcement, bioactivity, or bioresorption.

29. An implantable device as described in claim 28, wherein the porosity is present throughout the body, localized within regions of the body, or functionally graded in any material or implant direction from a highly porous region to a relatively dense region.

30. An implantable device as described in claim 28, wherein the porosity and the size of the pores are selectively formed by the inclusion of a porogen material during synthesis of the implantable device, and wherein the porogen material is leached from the implantable device.

31. An implantable device as described in claim 28, wherein the pores accommodate or deliver bone morphogenetic protein, growth factors, transcription factors, matrix metalloproteinases, peptides, proteins, bone cells, progenitor cells, blood plasma, bone marrow aspirate, or combinations thereof.

32. An implantable device as described in claim 28, wherein the polymer comprises a radiolucent polymer.

33. An implantable device as described in claim 28, wherein the calcium phosphate reinforcement particles comprise single crystals or dense polycrystals.

34. An implantable device as described in claim 28, wherein the body further includes a roughened surface that comes into contact with adjacent bodies in order to prevent movement after implantation.

35. An implantable device as described in claim 28, wherein the implant device comprises an interbody spinal fusion cage, bone ingrowth scaffolding for implant fixation, fracture fixation, synthetic bone graft substitute, or a tissue engineering scaffold.

* * * * *